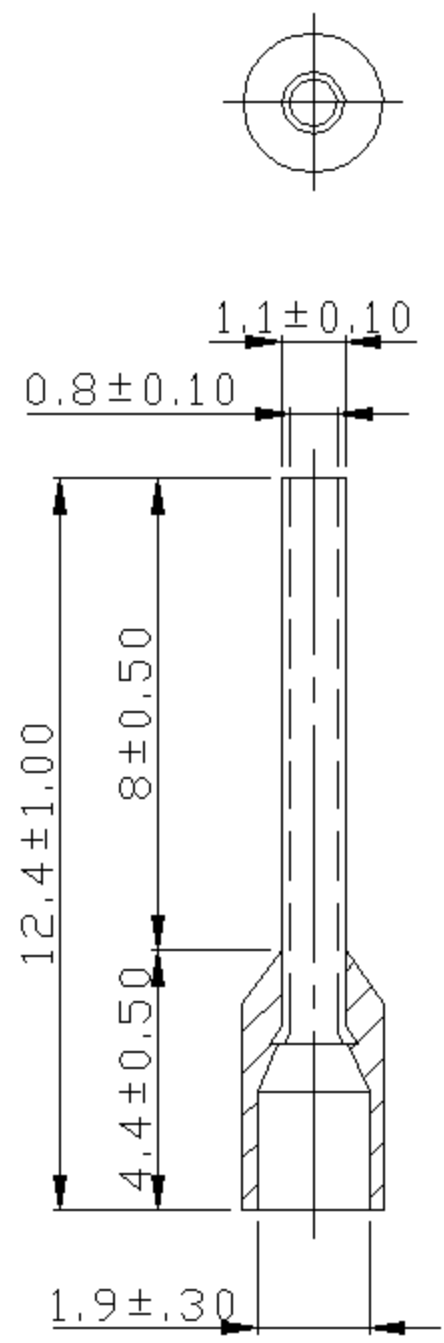


A B C D E F G H

REV	DESCRIPTION	DATE
-----	-------------	------



- NOTE:
1. MAXIMUM ELECTRIC CURRENT :

A.W.G.	24
AMP.	7
 2. MAXIMUM ELECTRICAL RATING : 105°C 600 VOLTS MAX.
 3. INSULATION MATERIAL : NYLON
 4. INSULATION COLOR :
FRENCH COLOR : PINK
GERMAN COLOR : TURQUOISE
DIN COLOR : ---
 5. CONNECTOR MATERIAL : COPPER TUBE.
 6. WIRE RANGE : 24 A.W.G.(0.34 mm²)

Tolerance Unless Otherwise Specified	
0 >6 mm ±0.20	ANGLE
6 >18 mm ±0.30	0° REF ±
18 >30 mm ±0.40	±
30 >75 mm ±0.50	±

NAME	NYLON-INSULATED CORD END TERMINALS (E SERIES)			UNIT	mm	
PART NO.	E0308	MATERIAL	-----	APPROVE	張馨尹	
NUMBER	KA-95404-C	SCALE	SHEET	PAGE	CHECKED	
DATE	2006/05/10	5/1	1-0	10F1	DRAWN	張馨尹

KST® K.S. TERMINALS INC.

A B C D E F G H